

4 Years | Undergraduate Professional Program | Bachelor of Design

## B.Des. in Public Space Design



### FOR FURTHER INFORMATION

**NINAD KORANNE**

ninad.koranne@manipal.edu

### PUBLIC SPACE DESIGN

**VISION** Public spaces, whether interior or exterior, planned or unplanned, temporary or permanent, exist across diverse scales. B. Des in Public Space Design program at Srishti Manipal actively aligns with ethos of interdisciplinary and trans-disciplinary design practice & pedagogy. It cultivates a capacity to draw from diverse fields of knowledge, contextualize and develop creative visions for inclusive and sensitive spatial design responses. B. Des in Public Space Design aligns its graduates with diverse professional opportunities in the fields of architecture and interior design, product design, governmental and government-allied consultancy, community consultation & place-making practices, and many more.

### ELIGIBILITY

As per AICTE guidelines published on the admissions page of the Srishti Manipal website.

### MEDIUM OF INSTRUCTION

English; all our transactions and transcripts will be in English.

### DURATION

8 semesters (4 years); must be completed within 6 years from the start of the course of study.

### DESCRIPTION OF CURRICULUM COMPONENTS

**FOUNDATION STUDIES** introduces students to basic principles and tools of Art and Design through contextual studies and hands-on learning and is common to all courses.

**DISCIPLINARY STUDIOS** are learning spaces where students develop core disciplinary skills and knowledge, while navigating in a trans-disciplinary environment.

**WORKSHOPS** provide intense learning experiences in making and doing, across the different disciplines.

**GENERAL STUDIES** are designed to develop and broaden one's world view and sharpen critical thinking and communication skills.

**ELECTIVES** allow students to expand their skills, develop interests and provide opportunities for travel and exchange.

**ABILITY & SKILL ENHANCEMENT COURSES (AEC), (SEC)** include learning units that enable enrichment of knowledge specific to a discipline, or are skill-based and provide hands-on-training and competencies.

**CHARETTES** are end of semester challenges that allow students to apply their learning from the studios and workshops to participate in brief-driven, quick-fire design assignments.

**INTERIM** is an open elective that encourages exploration through an open-ended framework for learning by engaging with artistic practices. Contemporary artists are invited from all over the world to lead place-based projects.

**INTERNSHIP** in an art or design studio/ organization / industry provides students an opportunity to refine and apply their learning in a professional environment.

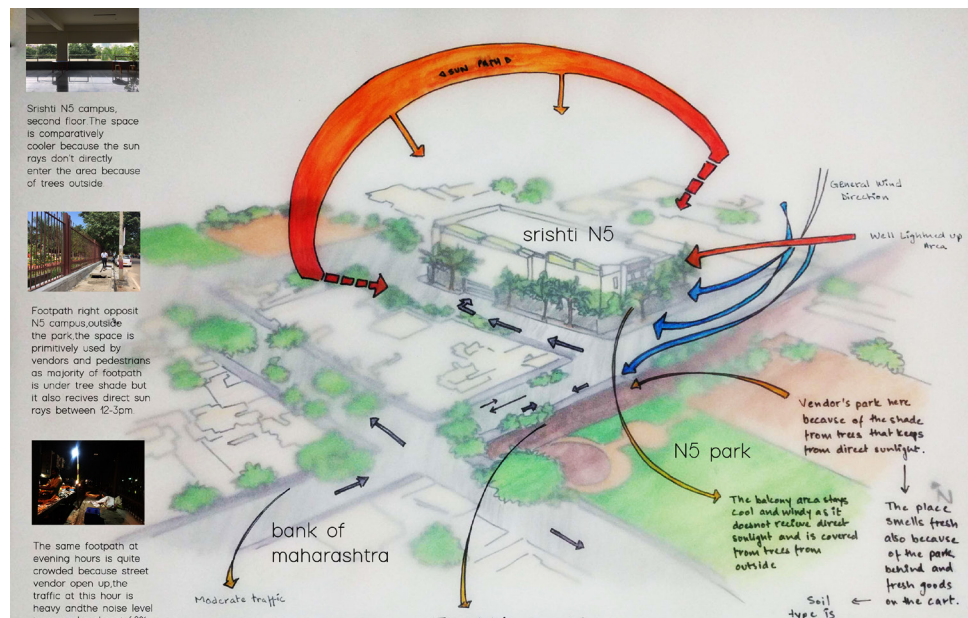
**TERM PAPER** allows the integration of theory and reflection with practice or artefact creation.

**PROJECT** involves the application, synthesis and demonstration of capabilities acquired, and is a qualifier to the thesis.

**THESIS PROJECT** in the final year is the synthesis and demonstration of capabilities acquired. The first semester includes a qualifying research project; the second a Final Thesis project which is interdisciplinary, within a current context.

**CO-CURRICULAR ACTIVITIES** provide opportunities for students to stay healthy as well as broaden their talents in various activities.

CURRICULUM COMPONENTS	SEMESTER
Generic Skills	1, 2
Contextual Enquiry	1, 2
Performance of Understanding	1, 2
Disciplinary Studios	3, 4, 5, 6
Design Charette	3, 4, 5, 6
Internship	Between 6 & 7
Project	7
Term Paper	7
Thesis	8
Exhibition	8
Open Electives	1, 2, 3, 4, 5, 6
Workshops	1, 2, 3, 4, 5, 6, 7
General Studies	1, 2, 3, 4, 5, 6, 7
Ability & Skill Enhancement Courses	1, 2, 3, 4, 5, 6
Co-Curricular Activities	1, 2, 3, 4, 5, 6



Contextual Analysis of a Spatial Design project (Semester 3 Students; SMI)

## MAJOR AND MINOR

Navigation for students under the CBCS is provided through the choice of an academic major and minors. In addition to this, there is a choice of open electives, through General Studies and Interim.

An Academic Major typically consists of a Core Curriculum, with prescribed units of study. The Core Curriculum may comprise of the disciplinary studios listed below, which are indicative and not exhaustive. The choice of learning units taken as an academic major may also include similar disciplinary studios chosen from those listed on the prospectus of other specialised courses.

An Academic Minor is a student's second disciplinary choice and has its own prescribed units of study. A minor is chosen from learning units offered as prescribed as chosen from an interdisciplinary studies cluster other than the one in which their course is located.

## CURRICULUM COMPONENTS

(This list may be amended and is listed here as indicative of the program of study)

### SEMESTER 1 & 2 – ODD & EVEN FOUNDATION STUDIES

(Common and Compulsory to All Specialisations)

#### Studio

Generic Skills  
Contextual Enquiry  
General Studies

Interim (Learning Expeditions)

### SEMESTER 5 – ODD DISCIPLINARY STUDIOS

#### Studio

SMPS2315	Urban Strategy and Environment
SMPS2319	City Studies (systems and sciences)
SMPS2321	Cultural Forms

#### Workshops

SMPS2329	Lighting in Public Spaces
----------	---------------------------

### SEMESTER 3 – ODD DISCIPLINARY STUDIOS

#### Studio

SMPS2305	Communicating Space 1
SMPS2301	Mapping Public Spaces -Tools and Processes
SMPS2309	Making Places - Materiality and Usability: Part 1

#### Workshops

SMPS2323	Design Communication - 3D Max and AUTOCAD
----------	---

### SEMESTER 6 – EVEN OPEN ELECTIVE – INTERIM DISCIPLINARY STUDIOS

#### Studio

SMPS2316	Reclaiming Urban Space
SMPS2330	People Places - Health and Safety

#### Workshops

SMPS2334	Art and Association in Place
----------	------------------------------

### SEMESTER 4 – EVEN OPEN ELECTIVE – INTERIM DISCIPLINARY STUDIOS

#### Studio

SMPS2312	Design for All
SMPS2306	Narrating Spaces
SMPS2304	Managing Waste

#### Workshops

SMPS2332	Model Making
----------	--------------

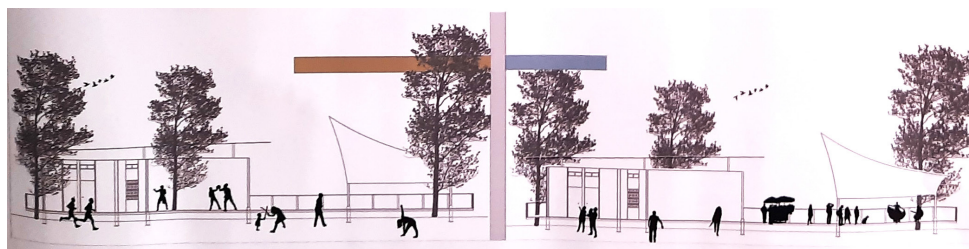
### SEMESTER 7 – ODD PRE-THESIS PROJECT TERM PAPER

### SEMESTER 8 – EVEN THESIS PROJECT EXHIBITION

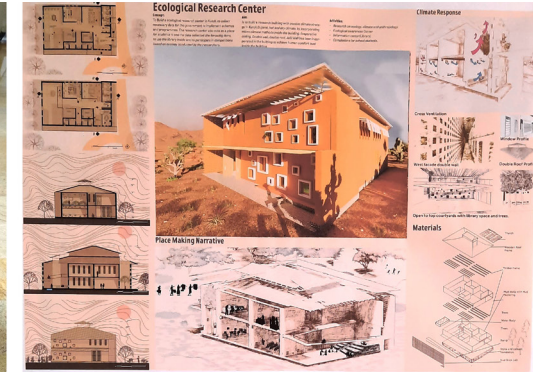


**UPON SUCCESSFUL COMPLETION OF THIS COURSE GRADUATES WILL HAVE DEVELOPED THE FOLLOWING CAPABILITIES:**

- » To empathize, interact, collaborate & co-design with communities to understand and design for their needs and well-being.
- » To effectively visualize, communicate and represent spatial design concepts and ideas to a larger audience.
- » To give shape and form to ideas and concepts, make, prototype, and intervene.
- » To work in professional environments with integrity and competence.
- » To understand, explore and creatively work with materials, services, and systems.
- » To understand complexities of multifaceted contexts and develop an integrated and comprehensive approach to design.
- » To be able to think critically through reflection and identify patterns to independently develop one's practice.



Communication of Spatial Design & Placemaking Ideas for Community Centre (Semester 5 Student; SMI)



Exploration, communication & Representation of Spatial Design Ideas through diverse mediums & techniques

**For more information on the programs and courses**

[www.srishtimanipalinstitute.in](http://www.srishtimanipalinstitute.in)  
 Help Desk: +919071784747 Direct: +91 80 24497101 / 02  
[admissions@srishtimanipalinstitute.in](mailto:admissions@srishtimanipalinstitute.in)

[www.manipal.edu/srishtimanipalinstitute](http://www.manipal.edu/srishtimanipalinstitute)  
 +91 924377722 / 33 / 44